

Electronic Instant Hot Water Appliance Installation, Operation and Care Instructions



Please read these instructions fully before commencing the installation and operation of the Electronic Instant Hot Water Appliance

Please read in full to fully understand this guide for the installation, operation and maintenance for your 3 in 1 / 4 in 1 Instant hot water Tank.

IMPORTANT NOTICE: This product can cause harm if installed incorrectly and should only be installed by competent professional, if you feel for any reason unsure about installation, please contact a qualified plumber or electrician to install the appliance.

Do not plug in the instant Hot Water Tank, until all water connections have been installed and checked for being watertight and the Instant Hot Water Tank must be filled to the max with water. The Instant Hot Water Tank is filled once water starts to pass out of the tap spout. It is recommended before using the tank, to flush through several litres of water before using to remove air from system.

For your safety and satisfaction please read all the instructions, cautions and warnings before installing or using this electronic instant hot water appliance.

This electronic hot water appliance is not intended for commercial use.

Make sure all electrical wiring and connections conform to local standards.

Make sure all water connections conform to local standards.

Make sure all electrical wiring and water connections conform to local codes. Standard 220/240v grounded 10 amp switched electrical outlet is required under the sink. If possible, use a separate circuit dedicated to your Hot Water Tank.

The instant hot water appliance is an open vented system appliance. The operating pressure is 1.5 bar to maximum of 5 bar.

The water filter (Anti-Scale Carbon water filter) must be connected to the electronic instant hot water appliance and replaced every 3-6-months, or the guarantee will be void.

Equipment Required:

Tape Measure



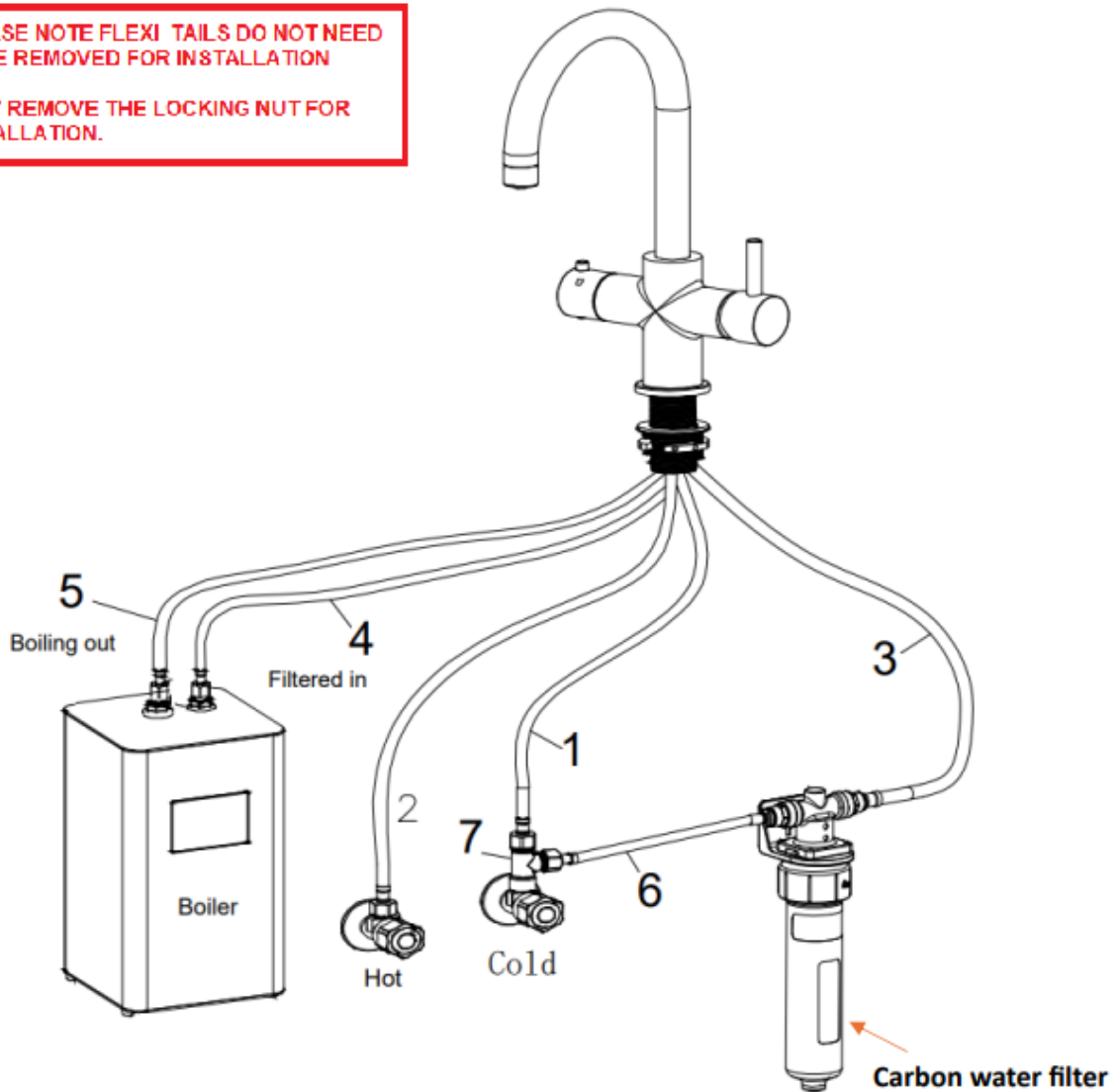
Adjustable Wrench



3 IN 1 Instant Boiling Water Tap Connection Drawing

PLEASE NOTE FLEXI TAILS DO NOT NEED TO BE REMOVED FOR INSTALLATION

ONLY REMOVE THE LOCKING NUT FOR INSTALLATION.

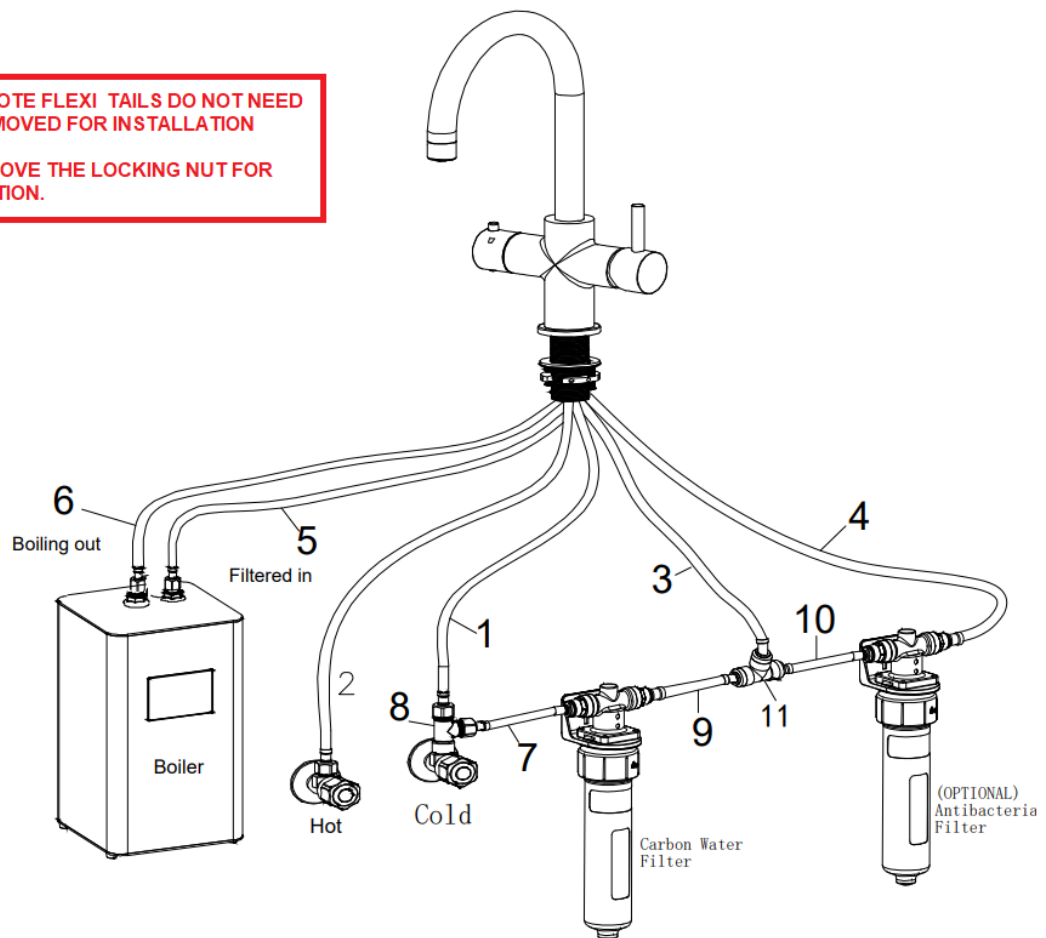


| NO. | DESCRIPTION | QTY | SIZE |
|-----|--------------------------------------|-----|--------------------|
| 1 | Cold Water Inlet Flexi Tail | 1 | M8*1-3/8" thread |
| 2 | Hot Water Inlet Flexi Tail | 1 | M8*1-1/2" thread |
| 3 | Filted Cold water inlet (For Boiler) | 1 | M8*1-Ø1/4" |
| 4 | Inlet for Boiler from Tap connection | 1 | M8*1-3/8" thread |
| 5 | Outlet from Boiler to Tap connection | 1 | M8*1-3/8" thread |
| 6 | Flexi: Cold water supply to Filter | 1 | 3/8 thread - Ø1/4" |
| 7 | Three way connector | 1 | G1/2" *M3/8"*M3/8" |

4 IN 1 Instant Boiling, Filtered Water Tap Connection Drawing

PLEASE NOTE FLEXI TAILS DO NOT NEED TO BE REMOVED FOR INSTALLATION

ONLY REMOVE THE LOCKING NUT FOR INSTALLATION.



| NO. | DESCRIPTION | QTY | SIZE |
|-----|---|-----|--------------------|
| 1 | Cold Water Inlet Flexi Tail | 1 | M8*1-3/8" thread |
| 2 | Hot Water Inlet Flexi Tail | 1 | M8*1-1/2" thread |
| 3 | Filted Cold water (For Tap) | 1 | M8*1-Ø1/4" |
| 4 | Filted Cold water inlet (For Boiler) | 1 | M8*1-Ø1/4" |
| 5 | Inlet for Boiler from Tap connection | 1 | M8*1-3/8" thread |
| 6 | Outlet from Boiler to Tap connection | 1 | M8*1-3/8" thread |
| 7 | Flexi: Cold water supply to Filter | 1 | 3/8 thread - Ø1/4" |
| 8 | Three way connector | 1 | G1/2" *M3/8"*M3/8" |
| 9 | PE hose from filter outlet to T adaptor | 1 | Ø1/4" |
| 10 | PE hose | 1 | Ø1/4" |
| 11 | 1/4" quick fit T-adaptor | 1 | Ø1/4" |

It is important to ensure that the plumbing part of the installation is completed and has been tested to ensure it is free of leaks before any electrical connection is made to the unit. Do not install the appliance in rooms where the temperature may drop to 0°C. The Tap or Boiling Water Tank has been stored prior to Installation in a place where the temperature could have fallen below 0°C, allowed to acclimatize at room temperature for a minimum of one hour prior to connection to a water supply.

Before installing the 3-1 or 4-1 instant boiling water tap it is essential to thoroughly flush through the supply pipes in order to remove any impurities from your system. Failure to carry out this simple procedure could cause problems or damage.

You must install isolation valves to both the hot and cold feed pipes in an accessible position. This will help prevent temperature failure and ease any future maintenance. All parts should be removed from their packaging and inspected prior to installation.

Positioning the Boiling Water Tank unit and the filter

The reservoir/heater unit should be positioned on a flat level surface such that:

- There is a minimum airspace of 150mm to each side of the reservoir/heater unit.
- There is a minimum airspace of 25mm to the rear of the reservoir/heater unit.
- Access to any stopcocks, valves, waste traps or other plumbing fitting that may require service is not impeded.

The front display and operating controls are readily accessible and visible.

1. All connection pipes can be installed without stretching or twisting them.
2. Access to the electrical power socket to be used for this appliance is not restricted in.
3. Ensure a fused 10AMP power supply within reach of the power cable, ensure cable is not stretch. If it is necessary to extend the power cable to reach the nearest suitable socket, this must be done by an electrician. A double GPO will be needed if you are installing a Boiler & Chiller
4. The filter is supplied pre-assembled to its plastic wall bracket. This should mount in a convenient location on a wall or cabinet side, taking into consideration the length and routing of the connecting hoses.

Boiler Operation

DO NOT SWITCH ON THE HOT WATER TANK at this stage until the following has been carried out.

1. Run the FILTERED WATER for a minimum of 5 minutes to activate and clean the carbon agency inside the Anti-scaling filter.
2. Run the BOILING WATER for a minimum of 5 minutes to fill the Hot water Tank.

By taking this small step will prevent any carbon dust from the filter. If there is any black coloured water, it is harmless and it will clear itself by running the water.

Open all installed water valves to allow water to flow to the 3 - 1 or 4-1 instant hot water taps.

For the boiler Turn the spring-back hot water tap handle against its spring and hold there until the water flows from the tap spout which indicates the taps reservoir is full.

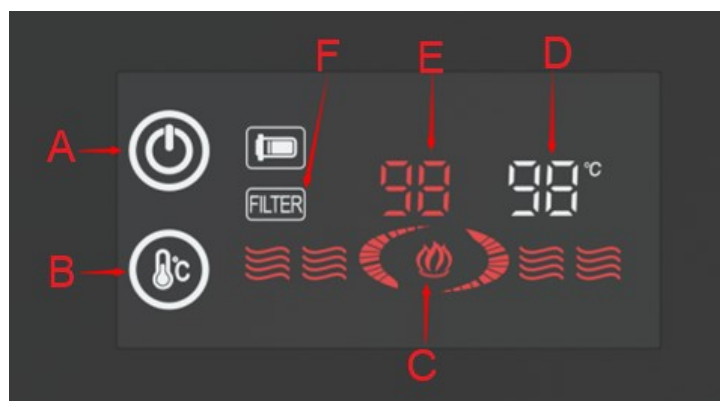
Allow the hot water handle to spring back to its rest position and check all the connections for water tightness and absence of leaks.

Any leaking joints must be tightened, and the surrounding area dried before connecting the power supply.

ONLY connect the electricity supply to the Hot Water Tank at this stage. Insert the plug into the electricity socket and switch on.

How to control the INSTANT BOILING WATER TANK

- A: On/Off Key
- B: Temperature setting Key
- C: Heating Display
- D: preset Temperature Indicator
- E: Actual Temperature Indicator
- F: Filter Life Indicator



Press the “on/off” key (A) for 2 second to switch the heater on. Press again to switch off.

Scroll through temperature settings using temperature setting key (B), leave on desired temperature, indicator will flash three times and set temperature indicator (D).

A reminder will flash after 6 months (or less) and again after 12 hours. To reset the indicator, replace the filter, press and hold the Temperature Setting Key(B) while the Boiling Water Tank is switched off.

The “Actual Temperature” indicator (E) shows the actual temperature of the water in the Boiling Water Tank. When the water is heating up, indicator (C) will illuminate.

Care and Maintenance Important:

The Warranty Is Void If the Water Filter Is Not Replaced at A Minimum Of 6 (six) Months from Its First Use. If The System Is used in the hard Water Area, Customer Should Consider Replacing the Water Filter in A Shorter Period Before the Six Months Period.

To avoid frequent heating, Press the temperature setting key for 3 seconds without releasing it to enter the interval temperature setting mode. Touch the temperature setting key (B) and set the heat up interval. This machine provides 3°C, 5°C, 7°C, and 9°C for options, and the default is 5°C.

Tap the On/Off Key(A) 5-7 times when the Boiling Water Tank is switched off to switch between Celsius and Fahrenheit display

Do Not Perform Maintenance or Cleaning of The Boiling Water Tank Without First Switching Off The Electricity Supply. Cleaning Should Be Carried Out with A Non-abrasive Cleaner. Any Abrasive Cleaner Will Scratch the Surface and Could Erase the Marking. The Exterior of Your Boiling Water Tank Can Be Cleaned Effectively By Using a Damp Cloth and Mild Detergent. Finish Off By Drying with a Clean Cloth.

Replacement Filters available through retailer

SPECIFICATIONS

| | | |
|--------------------------|--------------------|--|
| Supply | 230V ~ 50Hz | |
| Power | 1.5 kW | |
| IP rating | X4 | |
| Tank Capacity | 2.4 liters | |
| Immediate draw off | 1.7 liters | |
| Minimum supply pressure | 0.15 MPa (1.5 bar) | |
| Minimum supply pressure | 0.5 MPa* (5 bar) | |
| Hot and cold connections | 3/8" BSP | |
| Approvals | RCM, CE, WRAS | |

*If pressure is above 0.5Mpa(5bar), pressure reducing valve is required.

Guarantee

This product is covered by a standard warranty for 2 years, serviceable parts are covered by 1 year warranty.

Incorrect installation, frost damage, the consequences of limescale deposits or failure to follow correct operating and maintenance instructions will invalid your warranty.

Contact us

If you experience a problem with this product, you should firstly contact our service department before taking further action. Experience has shown that issues can often be resolved without the need to return or uninstall the product.

Important Notice on Boiler



- + To prevent electrical shock do not place the hot water tank near or in water or other liquids and install on a flat surface.
- + Do not install in environments above 35°C or exposed to freezing.
- + Can be used by children 12+ or people with learning difficulties if they have been given supervision or instructed on the hazards involved. Do not operate or install electrical connections with wet hands.
- + Do not install the appliance if it appears damaged in any way.
- + Only use power lead supplied with the product. If the power lead is damaged, stop using it immediately and contact customer services for a replacement.
- + Do not remove tank casing, this product is not serviceable and should be returned to the manufacturer in the event of a fault.
- + Do not modify the tank or remove the plug as this will invalidate the warranty and could cause serious injury.
- + If the unit is unused for extended periods of time it should be unplugged, drained, re-filtered and refilled.
- + The tank and water tank can be cleaned with a lint free damp cloth. Do not use any abrasive or corrosive cleaning products as this will damage the surface of the product.
- + Replace the filter every 3-6 months.

Trouble Shooting

Below is a list of some of the possible malfunctions.

If the problem cannot be resolved as described, contact the dedicated customer care line (details on back cover).

| PROBLEM | POSSIBLE CAUSE | WHAT TO DO |
|---|--|--|
| "Set temperature "indicator flashed "E3" | Insufficient water in the tank | Prime the installation as described in the installation instruction below |
| Water and Steam is spitting from the instant hot water tap spout. | The unit is boiling. | Turn the instant hot water tap handle on and release the water. Adjust the water temperature on the display to a lower setting. Check Aerator not blocked. Re-Prime Bladder to allow correct operation. |
| Water is not hot. | The electronic instant hot water appliance is unplugged. The electronic display has not been powered up. | Turn the instant hot water tap handle on and release the water. Adjust the water temperature on the display to a lower setting. Check Aerator not blocked. Re-Prime Bladder to allow correct operation. |
| Water is too hot. | Water temperature setting on display panel is set too high. | Re-set the temperature to the required temperature and confirm the heating up |
| Water is dripping from the instant hot water tap spout. | The expansion chamber isn't draining the system correctly due to very small draw off of water. Blockage/Restriction after tank. | Draw off 0.5L of water to clear and prime the system. Avoid less than 150ml draw offs of water. Check for kinks in silicon tube. Ensure silicon tube is cut to optimum length. Remove and clean the aerator. |
| Slow Flow from the spout. | The water filter maybe clogged from impurities in the inlet mains water Blockage /Restriction after tank. | The water filter must be changed every 6months; Failure to do this may invalidate your warranty Draw off 0.5L of water to clear and prime the system, avoid less than 150ml draw offs of water. Remove and clean the aerator. |
| Water does not flow immediately | The electronic instant hot water appliance is designed for non-pressurized operation and there will be slight delay till the near boiling water appears. | After a large volume of water has been drawn off there may a slightly longer delay in the water appearing from the instant hot water tap spout. |
| No Water flows. | Water valves have been turned off. Inlet pipes have become twisted or blocked. | Turn on all the water valves. Ensure the pipes are not twisted or kinked to restrict the flow. |

| No | PROBLEM | POSSIBLE CAUSE, WHAT TO DO |
|----|------------------------------|---|
| 1 | Product cannot run as normal | Shut off machine, then restart after 5 minutes; if not solved, please contact the technician or service number. |
| 2 | ERROR CODE "E4" | The temperature sensor is short-circuited, or the temperature sensor interface is short-circuited. |
| 3 | ERROR CODE "E7" | The temperature sensor is open-circuited, or the temperature sensor is not connected |
| 4 | ERROR CODE "E8" | After heating is completed, the temperature sensor probe detects an excessively high temperature, exceeding 100°C, and displays E8. (Temperature sensor acquisition failure). |
| 5 | ERROR CODE "E9" | After powering on, the temperature sensor probe detects a temperature below -2°C or 0°C, indicating that the pipe is frozen. The screen displays E9 and the heating system power supply is automatically stopped. |